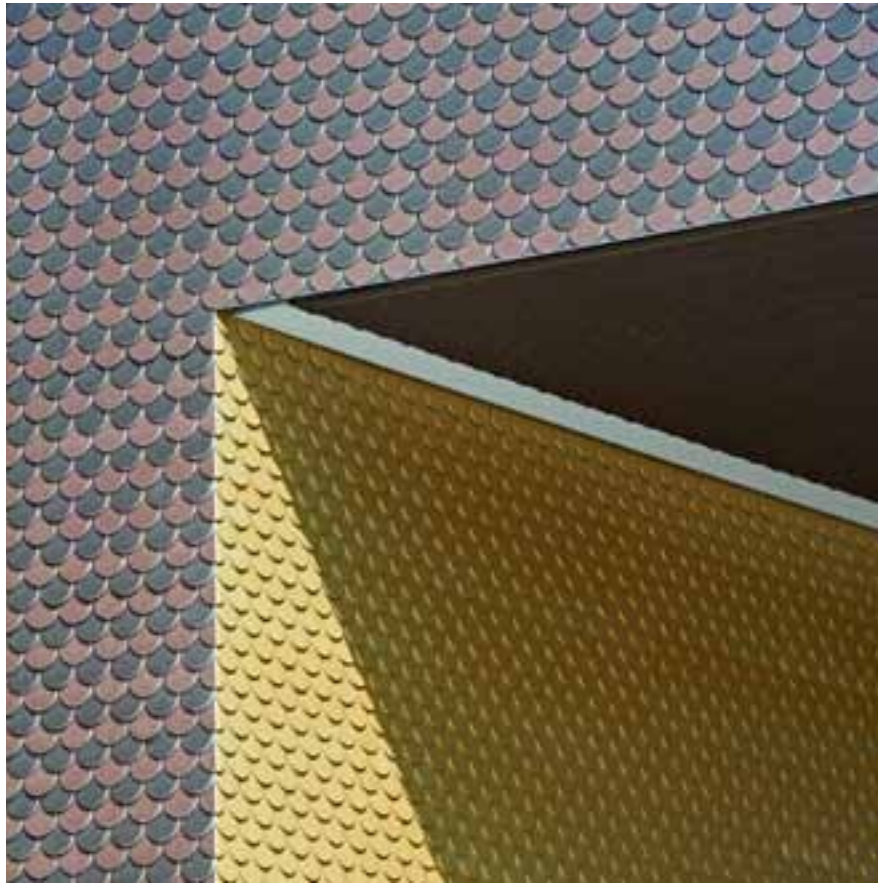


Apartment Hotel, Rotkreuz, Switzerland

Iridescent Pullover



As you approach the Rotkreuz Railway Station, one of the new multi-storey constructions immediately catches the eye: a modern façade with round shingles – and in two colours at that! The half-round Swiss modules are presented with the curves oriented downward and alternating in black and brown tones. Depending on how far away you are, the surface begins to fluoresce. From a distance, the individual points of the façade form a surface like the pixels of a monitor display. From close up, the rows create horizontal and vertical structure lines from the contrast of the two colours, which in turn draws the stippled image over the entire building. No material change or joints interrupt the flat surface of the view. “The scale skin serves as a foil for the strict façade pattern, which also overrides the storeys,” states architect Martin Jauch, “so that the façade begins to dissolve.” He concludes with a wink of the eye: “We wanted to use the festoon elements differently from the usual way.” In conversation, it becomes clear that a banal application of the Swiss slate was out of the question for the architect. As an additional extra, the recessed entrance is clad with the golden anodised aluminium shingles.

The lengthwise rectangular building with considerable depth encloses a three-star hotel. The guests have a choice

of 47 comfortably designed rooms, 3 furnished studios and a loft suite. With its favourable situation on the traffic axis between Zug and Lucerne, the hotel is oriented to individuals, mainly business people. On the top floor, there are an additional 3 rental apartments.

The building project, as well as the interior architecture, stem from the Lucerne architects Martin and Monika Jauch-Stolz. They have implemented the solid structure in local concrete and then wrapped it in an iridescent pull-over – a projected, back-ventilated Swiss slate façade.

Michael Hanak

Round black and brown cement composite modules create an iridescent scaled skin. The entrance area uses the same kind of round elements in golden anodised aluminium as a complement.

Location Mattenstrasse 1, Rotkreuz, Switzerland

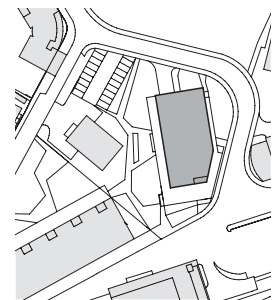
Client Rotkreuzhof-Immobilien AG, Rotkreuz

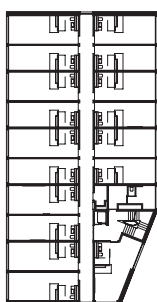
Architects MMJS Jauch-Stolz Architekten AG, Lucerne, Switzerland

Building period 2009–2010

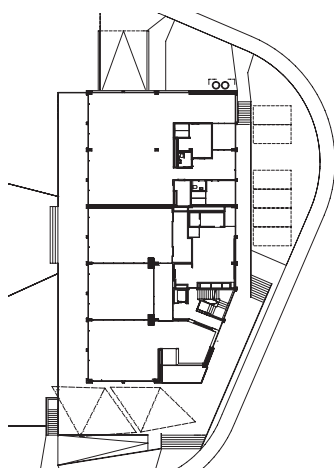
Façade construction Alex Gemperle AG, Hünenberg, Switzerland

Façade material Small formats NOBILIS, Black N012 and Brown TR914

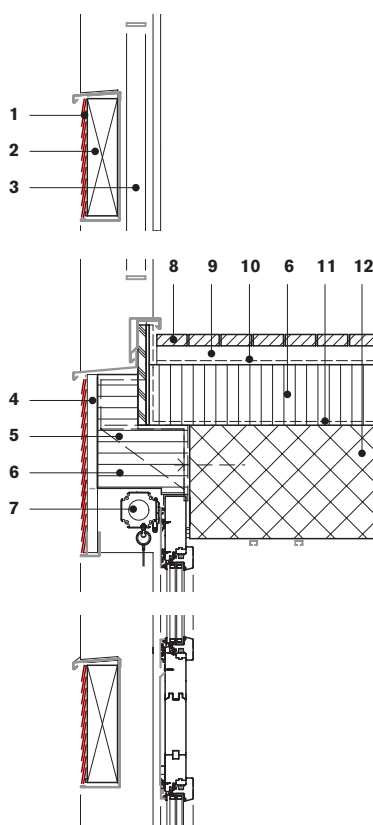




Second floor 1:1000



Ground floor



Vertical section penthouse terrace 1:20

- 1 Cement composite panel 4 mm, double layer
- 2 Longitudinal carrier, Glulam
- 3 Railing
- 4 Ventilation cavity, vertical battens
- 5 Metal substructure
- 6 Thermal insulation
- 7 Sunshade, textile
- 8 Flooring
- 9 Subframing
- 10 Waterproofing
- 11 Vapour barrier
- 12 Concrete